



Electro Neighborhood buddy 2 Passenger Street Legal Golf Cart

Product Code: **ENB- 2P**

Full Nationwide Warranty - Nationwide Delivery - Flexible Lease/Loan Programs



ALL of Our Vehicles Contain the Following Standard Features

- Head, Tail, and Brake Lights
- Side and Rear View Mirrors
- Windshield Wiper
- Parking Brake
- Charging Unit
- Turn Signals
- Horn
- Toughened Glass Windshield
- 10 Inch Tires
- Curtis Controller
- Reverse Alarm
- Floor: Non-slip plastic
- Cup Holders
- 2 Armrests per row
- Dashboard
- Forward/Reverse Switch
- Headlight Indicators
- Ignition Key
- Voltmeter
- Emergency Cut-off Switch
- Rack & Pinion Steering
- Rear & Front Pneumatic Braking System
- Independent Suspension
- Rear Steel Plate Suspension
- Rear Wheel Drive

Electro Neighborhood Buddy 2 Passenger Street Legal Golf Cart

Technical Specifications

Speed:	Up to 25 MPH
Range:	Up to 50 miles (full capacity)
Climb:	20% grade (full capacity)
Electric Motor:	4000 W / 5.5HP
Batteries:	Trojan T105 Plus
Controller:	Curtis
Min. Turning Radius:	10.8 ft
Overall Dimensions:	7.7 ft L x 4.0 ft W x 6.1 ft H
Maxload:	500 lbs.
Gross Vehicle Weight:	1,534 lbs.
Ground Clearance	5"
Body:	Steel Framework + Fiberglass
Roof:	Fiberglass
Windshield:	AS1 DOT Approved



**FOR MORE
AVAILABLE
OPTIONS PLEASE
VISIT OUR
WEBSITE'S
[ACCESSORIES PAGE](#)**



Electro Neighborhood Buddy 2 Passenger Utility Deluxe Street Legal Golf Cart

Product Code: **ENB- 2PUDLX**

Full Nationwide Warranty - Nationwide Delivery - Flexible Lease/Loan Programs



Rugged Bumpers Available: \$395.00

Electro Neighborhood Buddy 2 Passenger Utility Deluxe Street Legal Golf Cart

Technical Specifications

Speed:	Up to 20-25 MPH
Range:	Up to 50 miles (full capacity)
Climb:	20% grade (full capacity)
Electric Motor:	4 KW (5.5HP)
Batteries:	Trojan T105 Plus
Controller:	Curtis
Min. Turning Radius:	10.8 ft
Overall Dimensions:	10.5 ft L x 4.0 ft W x 6.1 ft H
Dimension of Cargo Box:	4.6 ft L x 3.6 ft W x .08 ft H
Maxload:	1000 lbs.
Gross Vehicle Weight:	2852 lbs.
Ground Clearance:	5"
Body:	Steel Framework + Fiberglass
Roof:	Fiberglass
Windshield:	AS1 DOT Approved

ALL of Our Vehicles Contain the Following Standard Features

- Head, Tail, and Brake Lights
- Side and Rear View Mirrors
- Windshield Wiper
- Parking Brake
- Charging Unit
- Turn Signals
- Horn
- Toughened Glass Windshield
- 10 Inch Tires
- Curtis Controller
- Reverse Alarm
- Floor: Non-slip plastic
- Dashboard
- Forward/Reverse Switch
- Headlight Indicators
- Ignition Key
- Voltmeter
- Emergency Cut-off Switch
- Rack & Pinion Steering
- Rear & Front Pneumatic Braking System
- Independent Suspension
- Rear Steel Plate Suspension
- Rear Wheel Drive
- Front/Rear Plate with Springs
- Mechanical Brakes on Rear Wheel

Hydraulic Dump Included

ON BOARD CHARGER INCLUDED
-3 Year Warranty on charging system-



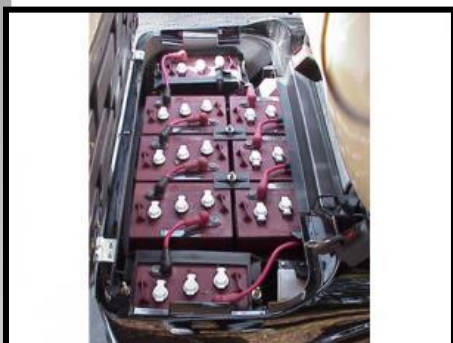
**FOR MORE
AVAILABLE
OPTIONS PLEASE
VISIT OUR
WEB SITE'S
[ACCESSORIES PAGE](#)**



Electro Neighborhood Buddy 2 Passenger Utility Hard Door Street Legal Golf Cart

Product Code: **ENB- 2PUHD**

Full Nationwide Warranty - Nationwide Delivery - Flexible Lease/Loan Programs



Electro Neighborhood Buddy 2 Passenger Utility Hard Door Street Legal Golf Cart

Technical Specifications

Speed:	Up to 25 MPH
Range:	Up to 50 miles (full capacity)
Climb:	20% grade (full capacity)
Electric Motor:	5.3 Kw DC Motor [AC Motor Avail]
Batteries:	Trojan T105 Plus
Controller:	Curtis
Min. Turning Radius:	14 ft
Overall Dimensions:	8.5 ft L x 4.2 ft W x 6.1 ft H
Maxload:	660 lbs. + Cargo
Ground Clearance	5"
Body:	Steel Framework + Fiberglass
Roof:	Fiberglass
Windshield:	AS1 DOT Approved

ALL of Our Vehicles Contain the Following Standard Features

- Head, Tail, and Brake Lights
- Side and Rear View Mirrors
- Windshield Wiper
- Parking Brake
- Charging Unit
- Turn Signals
- Horn
- Toughened Glass Windshield
- 10 Inch Tires
- Curtis Controller
- Reverse Alarm
- Floor: Non-slip plastic
- Cup Holders
- 2 Armrests per row
- Dashboard
- Forward/Reverse Switch
- Headlight Indicators
- Ignition Key
- Voltmeter
- Emergency Cut-off Switch
- Rack & Pinion Steering
- Rear & Front Pneumatic Braking System
- Independent Suspension
- Rear Steel Plate Suspension
- Rear Wheel Drive



**FOR MORE
AVAILABLE
OPTIONS PLEASE
VISIT OUR
WEB SITE'S
[ACCESSORIES PAGE](#)**



Electro Neighborhood Buddy 2 Passenger Utility XL Street Legal Golf Cart

Product Code: **ENB- 2PUXL**

Full Nationwide Warranty - Nationwide Delivery - Flexible Lease/Loan Programs



Electro Neighborhood Buddy 2 Passenger Utility XL Street Legal Golf Cart

Technical Specifications

Speed:	Up to 20-25 MPH
Range:	Up to 50 miles (full capacity)
Climb:	20% grade (full capacity)
Electric Motor:	4 KW (5.5HP)
Batteries:	Trojan T105 Plus
Controller:	Curtis
Min. Turning Radius:	14 ft
Overall Dimensions:	15.9 ft L x 4.0 ft W x 6.1 ft H
Cargo Bed Dimensions:	6.0 ft L x 4.0 ft W x .08 ft H
Maxload:	1500 lbs.
Gross Vehicle Weight:	2600 lbs.
Ground Clearance:	5"
Body:	Steel Framework + Fiberglass
Roof:	Fiberglass
Windshield:	AS1 DOT Approved

ALL of Our Vehicles Contain the Following Standard Features

- Head, Tail, and Brake Lights
- Side and Rear View Mirrors
- Windshield Wiper
- Parking Brake
- Charging Unit
- Turn Signals
- Horn
- Toughened Glass Windshield
- 10 Inch Tires
- Curtis Controller
- Reverse Alarm
- Floor: Non-slip plastic
- Dashboard
- Forward/Reverse Switch
- Headlight Indicators
- Ignition Key
- Voltmeter
- Emergency Cut-off Switch
- Rack & Pinion Steering
- Rear & Front Pneumatic Braking System
- Independent Suspension
- Rear Steel Plate Suspension
- Rear Wheel Drive
- Front/Rear Plate with Springs
- Mechanical Brakes on Rear Wheel

ON BOARD CHARGER INCLUDED
-3 Year Warranty on charging system-



**FOR MORE
AVAILABLE
OPTIONS PLEASE
VISIT OUR
WEBITE'S
[ACCESSORIES PAGE](#)**



Electro Neighborhood Buddy 3 Passenger EMS Street Legal Golf Cart

Product Code: **ENB- 3PEMS**

Full Nationwide Warranty - Nationwide Delivery - Flexible Lease/Loan Programs



ALL of Our Vehicles Contain the Following Standard Features

- Head, Tail, and Brake Lights
- Side and Rear View Mirrors
- Windshield Wiper
- Parking Brake
- Charging Unit
- Turn Signals
- Horn
- Toughened Glass Windshield
- 10 Inch Tires
- Curtis Controller
- Reverse Alarm
- Floor: Non-slip plastic
- Cup Holders
- 2 Armrests per row
- Dashboard
- Forward/Reverse Switch
- Headlight Indicators
- Ignition Key
- Voltmeter
- Emergency Cut-off Switch
- Rack & Pinion Steering
- Rear & Front Pneumatic Braking System
- Independent Suspension
- Rear Steel Plate Suspension
- Rear Wheel Drive
- Front/Rear Plate with Springs

Electro Neighborhood Buddy 3 Passenger EMS Street Legal Golf Cart

Technical Specifications

Speed:	Up to 20 MPH
Range:	Up to 50 miles (full capacity)
Climb:	20% grade (full capacity)
Electric Motor:	3 KW
Batteries:	Trojan T105 Plus
Controller:	Curtis
Min. Turning Radius:	15 ft
Overall Dimensions:	11.5 ft L x 4.24 ft W x 6.23 ft H
Maxload:	530 lbs.
Gross Vehicle Weight:	2,007 lbs.
Ground Clearance	5"
Body:	Steel Framework + Fiberglass
Roof:	Fiberglass
Windshield:	AS1 DOT Approved



**FOR MORE
AVAILABLE
OPTIONS PLEASE
VISIT OUR
WEBSITE'S
[ACCESSORIES PAGE](#)**



Electro Neighborhood Buddy 4 Passenger (Back to Back) Highriser Street Legal Golf Cart

Product Code: **ENB- 4PRFH**

Full Nationwide Warranty - Nationwide Delivery - Flexible Lease/Loan Programs



Electro Neighborhood Buddy 6 Passenger (Back to Back) Street Legal Golf Cart

Technical Specifications

Speed:	Up to 25 MPH
Range:	Up to 40 miles (full capacity)
Climb:	20% grade (full capacity)
Electric Motor:	4000W / 5.5 HP AC MOTOR
Batteries:	Trojan T105 Plus
Controller:	Curtis
Min. Turning Radius:	10 ft
Overall Dimensions:	9.7 ft L x 4.5 ft W x 7.6 ft H
Maxload:	1,000 lbs.
Gross Vehicle Weight:	2,004 lbs.
Ground Clearance	11"
Body:	Steel Framework + Fiberglass
Roof:	Fiberglass
Windshield:	AS1 DOT Approved

ALL of Our Vehicles Contain the Following Standard Features

- Head, Tail, and Brake Lights
- Side and Rear View Mirrors
- Windshield Wiper
- Parking Brake
- Charging Unit
- Turn Signals
- Horn
- Toughened Glass Windshield
- 12 Inch Tires
- Curtis Controller
- Reverse Alarm
- Floor: Non-slip plastic
- Cup Holders
- Dashboard
- Forward/Reverse Switch
- Headlight Indicators
- Ignition Key
- Voltmeter
- Emergency Cut-off Switch
- Rack & Pinion Steering
- Rear & Front Pneumatic Braking System
- Independent Suspension
- Rear Steel Plate Suspension
- Rear Wheel Drive
- Front/Rear Plate with Springs



**FOR MORE
AVAILABLE
OPTIONS PLEASE
VISIT OUR
WEBSITE'S
[ACCESSORIES PAGE](#)**



Electro Neighborhood Buddy 4 Passenger (Forward Facing) Utility Street Legal Golf Cart

Product Code: **ENB- 4PFFU**

Full Nationwide Warranty - Nationwide Delivery - Flexible Lease/Loan Programs



ALL of Our Vehicles Contain the Following Standard Features

- Head, Tail, and Brake Lights
- Side and Rear View Mirrors
- Windshield Wiper
- Parking Brake
- Charging Unit
- Turn Signals
- Horn
- Toughened Glass Windshield
- 3 Point Shoulder Harnesses
- 10 Inch Tires
- Curtis Controller
- Reverse Alarm
- Floor: Non-slip plastic
- Cup Holders
- 2 Armrests per row
- Dashboard
- Forward/Reverse Switch
- Headlight Indicators
- Ignition Key
- Voltmeter
- Emergency Cut-off Switch
- Rack & Pinion Steering
- Rear & Front Pneumatic Braking System
- Independent Suspension
- Rear Steel Plate Suspension
- Rear Wheel Drive
- Front/Rear Plate with Springs
- Mechanical Brakes on Rear Wheel

Electro Neighborhood Buddy 4 Passenger (Forward Facing) Utility Street Legal Golf Cart

Technical Specifications

Speed:	Up to 25 MPH
Range:	Up to 50 miles (full capacity)
Climb:	20% grade (full capacity)
Electric Motor:	4 KW
Batteries:	Trojan T105 Plus
Controller:	Curtis
Min. Turning Radius:	14 ft
Maxload:	1,500 lbs.
Gross Vehicle Weight:	2,600 lbs.
Ground Clearance	5"
Body:	Steel Framework + Fiberglass
Roof:	Fiberglass
Windshield:	AS1 DOT Approved



**FOR MORE
AVAILABLE
OPTIONS PLEASE
VISIT OUR
WEB SITE'S
[ACCESSORIES PAGE](#)**



Electro Neighborhood Buddy 4 Passenger (Back to Back) Street Legal Golf Cart

Product Code: **ENB- 4PRF**

Full Nationwide Warranty - Nationwide Delivery - Flexible Lease/Loan Programs



Electro Neighborhood Buddy 4 Passenger (Back to Back) Street Legal Golf Cart

Technical Specifications

Speed:	Up to 25 MPH
Range:	Up to 50 miles (full capacity)
Climb:	20% grade (full capacity)
Electric Motor:	4000W / 5.5 HP
Batteries:	Trojan T105 Plus
Controller:	Curtis
Min. Turning Radius:	11.5 ft
Overall Dimensions:	9.7 ft L x 4.5 ft W x 6.1 ft H
Maxload:	1,500 lbs.
Gross Vehicle Weight:	2,540 lbs.
Ground Clearance	5"
Body:	Steel Framework + Fiberglass
Roof:	Fiberglass
Windshield:	AS1 DOT Approved

ALL of Our Vehicles Contain the Following Standard Features

- Head, Tail, and Brake Lights
- Side and Rear View Mirrors
- Windshield Wiper
- Parking Brake
- Charging Unit
- Turn Signals
- Horn
- Toughened Glass Windshield
- 10 Inch Tires
- Curtis Controller
- Reverse Alarm
- Floor: Non-slip plastic
- Cup Holders
- 4 Armrests per row
- Dashboard
- Forward/Reverse Switch
- Headlight Indicators
- Ignition Key
- Voltmeter
- Emergency Cut-off Switch
- Rack & Pinion Steering
- Rear & Front Pneumatic Braking System
- Independent Suspension
- Rear Steel Plate Suspension
- Rear Wheel Drive
- Front/Rear Plate with Springs



**FOR MORE
AVAILABLE
OPTIONS PLEASE
VISIT OUR
WEBSITE'S
[ACCESSORIES PAGE](#)**



Electro Neighborhood Buddy 4 Passenger (Forward Facing) Street Legal Golf Cart

Product Code: **ENB- 4PFF**

Full Nationwide Warranty - Nationwide Delivery - Flexible Lease/Loan Programs



Electro Neighborhood Buddy 4 Passenger (Forward Facing) Street Legal Golf Cart

Technical Specifications

Speed:	Up to 25 MPH
Range:	Up to 50 miles (full capacity)
Climb:	20% grade (full capacity)
Electric Motor:	4000W / 5.5 HP
Batteries:	Trojan T105 Plus
Controller:	Curtis
Min. Turning Radius:	14 ft
Overall Dimensions:	10.3 ft L x 4.0 ft W x 6.1 ft H
Maxload:	1,500 lbs.
Gross Vehicle Weight:	2,600 lbs.
Ground Clearance	5"
Body:	Steel Framework + Fiberglass
Roof:	Fiberglass
Windshield:	AS1 DOT Approved

ALL of Our Vehicles Contain the Following Standard Features

- Head, Tail, and Brake Lights
- Side and Rear View Mirrors
- Windshield Wiper
- Parking Brake
- Charging Unit
- Turn Signals
- Horn
- Toughened Glass Windshield
- 10 Inch Tires
- Curtis Controller
- Reverse Alarm
- Floor: Non-slip plastic
- Cup Holders
- 2 Armrests per row
- Dashboard
- Forward/Reverse Switch
- Headlight Indicators
- Ignition Key
- Voltmeter
- Emergency Cut-off Switch
- Rack & Pinion Steering
- Rear & Front Pneumatic Braking System
- Independent Suspension
- Rear Steel Plate Suspension
- Rear Wheel Drive
- Front/Rear Plate with Springs



**FOR MORE
AVAILABLE
OPTIONS PLEASE
VISIT OUR
WEBBITE'S
[ACCESSORIES PAGE](#)**



Electro Neighborhood Buddy 4 Passenger Wheelchair Street Legal Golf Cart

Product Code: **ENB- 4PWC**

Full Nationwide Warranty - Nationwide Delivery - Flexible Lease/Loan Programs



Electro Neighborhood Buddy 4 Passenger Wheelchair Street Legal Golf Cart

Technical Specifications

Speed:	Up to 25 MPH
Range:	Up to 50 miles (full capacity)
Climb:	20% grade (full capacity)
Electric Motor:	5.3 Kw
Batteries:	Trojan T105 Plus
Controller:	Curtis
Min. Turning Radius:	19 ft
Overall Dimensions:	14.4 ft L x 4.0 ft W x 6.1 ft H
Maxload:	1200 lbs.
Gross Vehicle Weight:	2,508 lbs.
Ground Clearance	5"
Body:	Steel Framework + Fiberglass
Roof:	Fiberglass
Windshield:	AS1 DOT Approved

ALL of Our Vehicles Contain the Following Standard Features

- Head, Tail, and Brake Lights
- Side and Rear View Mirrors
- Windshield Wiper
- Parking Brake
- Charging Unit
- Turn Signals
- Horn
- Toughened Glass Windshield
- 10 Inch Tires
- Curtis Controller
- Reverse Alarm
- Floor: Non-slip plastic
- Cup Holders
- 4 Armrests per row
- Dashboard
- Forward/Reverse Switch
- Headlight Indicators
- Ignition Key
- Voltmeter
- Emergency Cut-off Switch
- Rack & Pinion Steering
- Rear & Front Pneumatic Braking System
- Independent Suspension
- Rear Steel Plate Suspension
- Rear Wheel Drive
- Front/Rear Plate with Springs



**FOR MORE
AVAILABLE
OPTIONS PLEASE
VISIT OUR
WEBSITE'S
[ACCESSORIES PAGE](#)**



Electro Neighborhood Buddy 6 Passenger (Back to Back) Highrider Street Legal Golf Cart

Product Code: **ENB- 6PRFH**

Full Nationwide Warranty - Nationwide Delivery - Flexible Lease/Loan Programs



Electro Neighborhood Buddy 6 Passenger (Back to Back) Street Legal Golf Cart

Technical Specifications

Speed:	Up to 25 MPH
Range:	Up to 40 miles (full capacity)
Climb:	20% grade (full capacity)
Electric Motor:	4000W / 5.5 HP AC MOTOR
Batteries:	Trojan T105 Plus
Controller:	Curtis
Min. Turning Radius:	14 ft
Overall Dimensions:	12.0 ft L x 4.5 ft W x 7.6 ft H
Maxload:	1,000 lbs.
Gross Vehicle Weight:	2,530 lbs.
Ground Clearance	11"
Body:	Steel Framework + Fiberglass
Roof:	Fiberglass
Windshield:	AS1 DOT Approved

ALL of Our Vehicles Contain the Following Standard Features

- Head, Tail, and Brake Lights
- Side and Rear View Mirrors
- Windshield Wiper
- Parking Brake
- Charging Unit
- Turn Signals
- Horn
- Toughened Glass Windshield
- 12 Inch Tires
- Curtis Controller
- Reverse Alarm
- Floor: Non-slip plastic
- Cup Holders
- Dashboard
- Forward/Reverse Switch
- Headlight Indicators
- Ignition Key
- Voltmeter
- Emergency Cut-off Switch
- Rack & Pinion Steering
- Rear & Front Pneumatic Braking System
- Independent Suspension
- Rear Steel Plate Suspension
- Rear Wheel Drive
- Front/Rear Plate with Springs



**FOR MORE
AVAILABLE
OPTIONS PLEASE
VISIT OUR
WEBSITE'S
[ACCESSORIES PAGE](#)**



Electro Neighborhood Buddy 6 Passenger (Back to Back) Street Legal Golf Cart

Product Code: **ENB- 6PFR**

Full Nationwide Warranty - Nationwide Delivery - Flexible Lease/Loan Programs



Electro Neighborhood Buddy 6 Passenger (Back to Back) Street Legal Golf Cart

Technical Specifications

Speed:	Up to 25 MPH
Range:	Up to 50 miles (full capacity)
Climb:	20% grade (full capacity)
Electric Motor:	4000W / 5.5 HP
Batteries:	Trojan T105 Plus
Controller:	Curtis
Min. Turning Radius:	14 ft
Overall Dimensions:	11.0 ft L x 4.0 ft W x 6.1 ft H
Maxload:	1,500 lbs.
Gross Vehicle Weight:	2,600 lbs.
Ground Clearance	5"
Body:	Steel Framework + Fiberglass
Roof:	Fiberglass
Windshield:	AS1 DOT Approved

ALL of Our Vehicles Contain the Following Standard Features

- Head, Tail, and Brake Lights
- Side and Rear View Mirrors
- Windshield Wiper
- Parking Brake
- Charging Unit
- Turn Signals
- Horn
- Toughened Glass Windshield
- 10 Inch Tires
- Curtis Controller
- Reverse Alarm
- Floor: Non-slip plastic
- Cup Holders
- 2 Armrests per row
- Dashboard
- Forward/Reverse Switch
- Headlight Indicators
- Ignition Key
- Voltmeter
- Emergency Cut-off Switch
- Rack & Pinion Steering
- Rear & Front Pneumatic Braking System
- Independent Suspension
- Rear Steel Plate Suspension
- Rear Wheel Drive
- Front/Rear Plate with Springs



**FOR MORE
AVAILABLE
OPTIONS PLEASE
VISIT OUR
WEBSITE'S
[ACCESSORIES PAGE](#)**



Electro Neighborhood Buddy 6 Passenger (Forward Facing) Street Legal Golf Cart

Product Code: **ENB- 6PFF**

Full Nationwide Warranty - Nationwide Delivery - Flexible Lease/Loan Programs



Electro Neighborhood Buddy 6 Passenger (Forward Facing) Street Legal Golf Cart

Technical Specifications

Speed:	Up to 25 MPH
Range:	Up to 50 miles (full capacity)
Climb:	20% grade (full capacity)
Electric Motor:	4000W / 5.5 HP
Batteries:	Trojan T105 Plus
Controller:	Curtis
Min. Turning Radius:	19 ft
Overall Dimensions:	13.5 ft L x 4.0 ft W x 6.1 ft H
Maxload:	1,500 lbs.
Gross Vehicle Weight:	2,995 lbs.
Ground Clearance	5"
Body:	Steel Framework + Fiberglass
Roof:	Fiberglass
Windshield:	AS1 DOT Approved

ALL of Our Vehicles Contain the Following Standard Features

- Head, Tail, and Brake Lights
- Side and Rear View Mirrors
- Windshield Wiper
- Parking Brake
- Charging Unit
- Turn Signals
- Horn
- Toughened Glass Windshield
- 10 Inch Tires
- Curtis Controller
- Reverse Alarm
- Floor: Non-slip plastic
- Cup Holders
- 2 Armrests per row
- Dashboard
- Forward/Reverse Switch
- Headlight Indicators
- Ignition Key
- Voltmeter
- Emergency Cut-off Switch
- Rack & Pinion Steering
- Rear & Front Pneumatic Braking System
- Independent Suspension
- Rear Steel Plate Suspension
- Rear Wheel Drive
- Front/Rear Plate with Springs



**FOR MORE
AVAILABLE
OPTIONS PLEASE
VISIT OUR
WEBSITE'S
ACCESSORIES PAGE**



Electro Neighborhood Buddy 6 Passenger Wheelchair Street Legal Golf Cart

Product Code: **ENB- 6PWC**

Full Nationwide Warranty - Nationwide Delivery - Flexible Lease/Loan Programs



Electro Neighborhood Buddy 6 Passenger Wheelchair Street Legal Golf Cart

Technical Specifications

Speed:	Up to 25 MPH
Range:	Up to 50 miles (full capacity)
Climb:	20% grade (full capacity)
Electric Motor:	5.3 Kw
Batteries:	Trojan T105 Plus
Controller:	Curtis
Min. Turning Radius:	19 ft
Overall Dimensions:	14.4 ft L x 4.0 ft W x 6.1 ft H
Maxload:	1200 lbs.
Gross Vehicle Weight:	2,508 lbs.
Ground Clearance	5"
Body:	Steel Framework + Fiberglass
Roof:	Fiberglass
Windshield:	AS1 DOT Approved

ALL of Our Vehicles Contain the Following Standard Features

- Head, Tail, and Brake Lights
- Side and Rear View Mirrors
- Windshield Wiper
- Parking Brake
- Charging Unit
- Turn Signals
- Horn
- Toughened Glass Windshield
- 10 Inch Tires
- Curtis Controller
- Reverse Alarm
- Floor: Non-slip plastic
- Cup Holders
- 4 Armrests per row
- Dashboard
- Forward/Reverse Switch
- Headlight Indicators
- Ignition Key
- Voltmeter
- Emergency Cut-off Switch
- Rack & Pinion Steering
- Rear & Front Pneumatic Braking System
- Independent Suspension
- Rear Steel Plate Suspension
- Rear Wheel Drive
- Front/Rear Plate with Springs



**FOR MORE
AVAILABLE
OPTIONS PLEASE
VISIT OUR
WEBSITE'S
[ACCESSORIES PAGE](#)**



Electro Neighborhood Buddy 8 Passenger Street Legal Golf Cart

Product Code: **ENB- 8P**

Full Nationwide Warranty - Nationwide Delivery - Flexible Lease/Loan Programs



Electro Neighborhood Buddy 8 Passenger Street Legal Golf Cart

Technical Specifications

Speed:	Up to 20-25 MPH
Range:	Up to 50 miles (full capacity)
Climb:	20% grade (full capacity)
Electric Motor:	4000W / 5.5 HP
Batteries:	Trojan T105 Plus
Controller:	Curtis
Min. Turning Radius:	19 ft
Overall Dimensions:	14 ft L x 4.5 ft W x 6.1 ft H
Maxload:	1,500 lbs.
Gross Vehicle Weight:	2,995 lbs.
Ground Clearance	5"
Body:	Steel Framework + Fiberglass
Roof:	Fiberglass
Windshield:	AS1 DOT Approved

ALL of Our Vehicles Contain the Following Standard Features

- Head, Tail, and Brake Lights
- Side and Rear View Mirrors
- Windshield Wiper
- Parking Brake
- Charging Unit
- Turn Signals
- Horn
- Toughened Glass Windshield
- 10 Inch Tires
- Curtis Controller
- Reverse Alarm
- Floor: Non-slip plastic
- Cup Holders
- 2 Armrests per row
- Dashboard
- Forward/Reverse Switch
- Headlight Indicators
- Ignition Key
- Voltmeter
- Emergency Cut-off Switch
- Rack & Pinion Steering
- Rear & Front Pneumatic Braking System
- Independent Suspension
- Rear Steel Plate Suspension
- Rear Wheel Drive
- Front/Rear Plate with Springs



**FOR MORE
AVAILABLE
OPTIONS PLEASE
VISIT OUR
WEBSITE'S
[ACCESSORIES PAGE](#)**